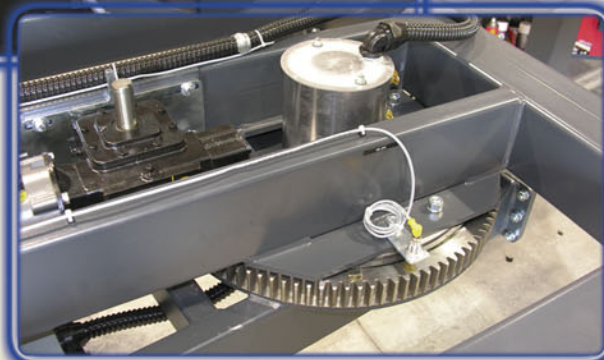


WULFTEC® AUTOMATIC STRETCH WRAPPERS

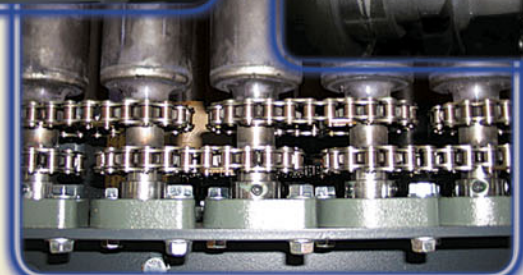


THE WULFTEC ADVANTAGE

THE KEY COMPONENT IN AN AUTOMATIC STRETCH WRAPPER IS WHAT DRIVES AND SUPPORTS THE WRAPPER. WE USE A 25" RING GEAR TO SUPPORT OUR STRETCH WRAPPERS COUPLED WITH A PINION GEAR TO DRIVE THE RING GEAR. OUR DIRECT DRIVE RING GEAR/PINION GEAR IS THE STRONGEST DRIVE SYSTEM IN THE INDUSTRY AND WE BACK THIS STATEMENT WITH A 10 YEAR WARRANTY ON THE RING GEAR.



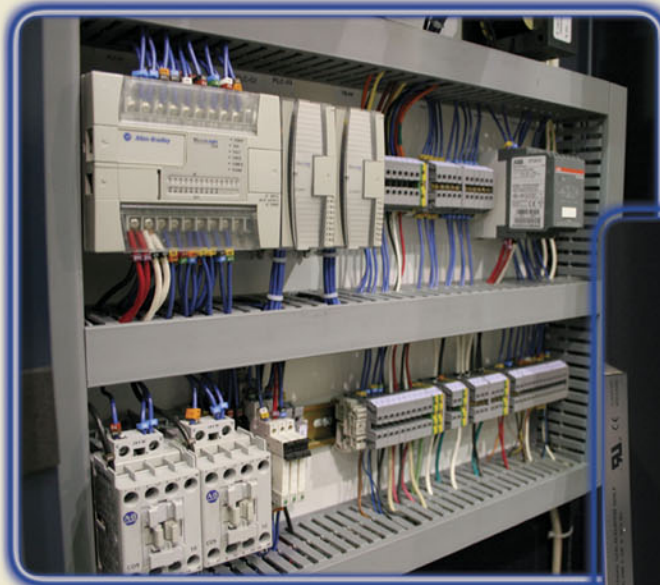
OUR 5,000 LBS CAPACITY CONVEYORS ARE SECOND TO NONE IN THE INDUSTRY. 2 1/2" ROLLERS ON 3" CENTERS, 3/16" THICK CONVEYOR WALLS, 1" HEX AXLES IN ROLLERS AND HEAVY DUTY FLANGE MOUNTED BEARINGS. NO ONE IN THE INDUSTRY BUILDS CONVEYORS TO WULFTEC'S SPECIFICATIONS



WULFTEC USES DUAL CHAINS TO LIFT THE FILM CARRIAGE UP AND DOWN. MOST OF THE COMPETITION USES A SINGLE CHAIN OR BELT TO LIFT THE CARRIAGE.



THE WULFTEC ADVANTAGE

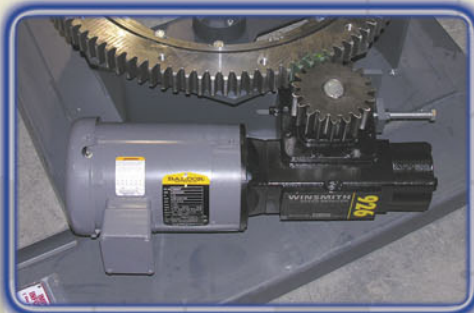


ALLEN BRADLEY IS OUR STANDARD PLC. MANY OF OUR COMPETITORS USE A PROPRIETARY MICRO PROCESSOR AS STANDARD AND WILL QUOTE PLC AT AN ADDITIONAL COST.



WULFTEC USES BALDOR 230/480V AC MOTORS WITH AB POWER FLEX 4 VARIABLE FREQUENCY DRIVES. WHEREAS MOST OF OUR COMPETITORS CONTINUE TO USE INFERIOR DC MOTORS WITH DC BOARDS, WULFTEC SWITCHED TO AC SEVERAL YEARS AGO. THOSE THAT DO OFFER AC MOTORS DON'T USE THEM THROUGHOUT THE MACHINE AND WILL USE CONTACT STARTERS WITH FREQUENCY DRIVES AVAILABLE AT AN ADDITIONAL COST. WULFTEC USES AC MOTORS THROUGHOUT; ALL MOTORS HAVE THE AB FREQUENCY DRIVES.

CONVEYOR ZONES HAVE DISCONNECTS WITH PREWIRED PLUGS RUNNING INTO BACK OF THE CONTROL PANEL. ALL MOTORS AND PROX SENSORS ALSO HAVE QUICK DISCONNECTS FOR EASE IN INSTALLATION AND MAINTENANCE.

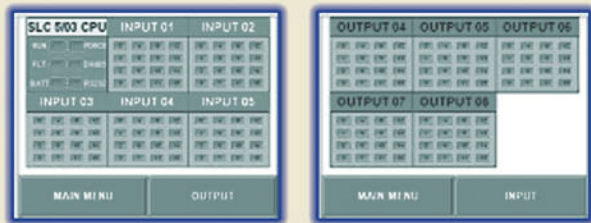


THE WULFTEC ADVANTAGE



ALLEN BRADLEY AB PANELVIEW 600 IS OUR STANDARD OPERATOR INTERFACE

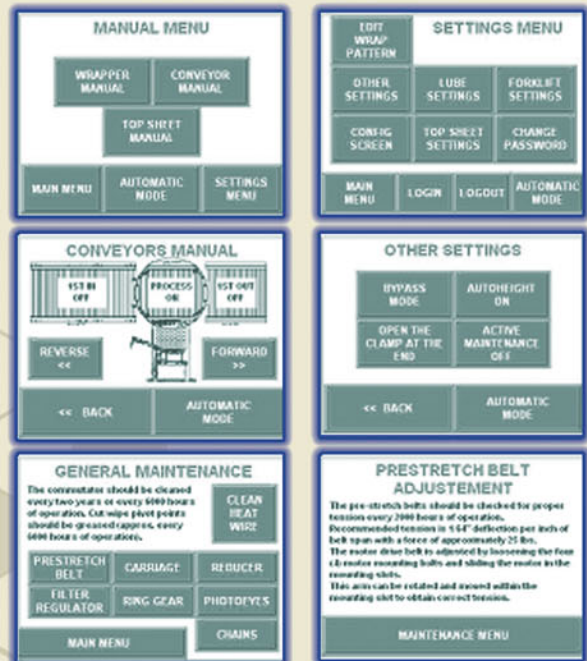
WE HAVE REFINED OUR TOUCH SCREEN PROGRAM OVER THE YEARS AND NOW OFFER 10 FULLY PROGRAMMABLE WRAP PATTERNS TO CHOOSE FROM. COMPLETE DIAGNOSTICS ARE ON THE SCREEN, IT WILL TELL YOU WHEN SOMETHING IS WRONG AND, MORE IMPORTANTLY, WHAT NEEDS TO BE FIXED.



WE HAVE A MAINTENANCE PAGE ON THE SCREEN AS WELL AS AN ACTIVE MAINTENANCE SCHEDULE. THE PLC KEEPS TRACK OF HOURS OF OPERATION AND CYCLES, THEN DISPLAYS MAINTENANCE PROCEDURES ON THE TOUCH SCREEN AT THE APPROPRIATE TIME. PERFORMANCE PAGE INCLUDES A NONRESETTABLE CYCLE COUNTER, RESETTABLE CYCLE COUNTER, AND A WRAPPED LOADS PER HOUR CALCULATOR.



MOST OF OUR COMPETITORS USE KNOBS AND SWITCHES OR A MEMBRANE PANEL FOR OPERATOR INTERFACE. THOSE THAT DO OFFER A TOUCH SCREEN AS AN OPTION, LACK OUR EXPERIENCE AND LEVEL OF PROGRAMMING.



WE FEAR NO PACKAGING CHALLENGE

M.J. MAILLIS
WULFTEC.com

THE WULFTEC ADVANTAGE



EVERYTHING GOES INTO A 36", 48", OR 60" WIDE BY 92" HIGH FREE STANDING CONTROL CABINET (DEPENDING ON THE OPTIONS YOU ORDER). CABINET IS NEMA 12 AND NEMA 4 RATED AS WELL AS COMPLIANT WITH CSA AND UL STANDARDS. WE USE PERMANENT PLASTIC WIRE MARKERS FOR NUMBERING INDIVIDUAL WIRES. YOU WON'T FIND A CLEANER, BETTER LAID OUT CONTROL CABINET ON ANY PIECE OF EQUIPMENT.

WE BUILD OUR MACHINES USING STANDARD OFF THE SHELF REPLACEMENT PARTS AND COMPONENTS. WULFTEC EVEN LISTS OEM PART NUMBERS IN OPERATOR/MAINTENANCE MANUAL SO REPLACEMENT PARTS CAN BE SOURCED LOCALLY.

AB Allen-Bradley

W WINSMITH
PEERLESS-WINSMITH, INC.

BALDOR

SICK



ALL OF THIS IS BACKED BY THE BEST WARRANTY IN THE INDUSTRY.
-LIFETIME WARRANTY ON PRE-STRETCH ROLLERS' BLUE COMPOUND
-10-YEAR WARRANTY ON THE STRUCTURAL STEEL FRAME
-10-YEARS WARRANTY ON 25" RING GEAR
-3 YEARS UNLIMITED CYCLES WARRANTY

ASK YOUR DISTRIBUTOR FOR DETAILS AND PRICING!

M.J. MAILLIS
WULFTEC.com

Wulftec International Inc.
209 Wulftec, Ayer's Cliff, Quebec, Canada J0B 1C0
Tel.: 819 838-4232
Toll Free: 1 877 WULFTEC (985-3832)
Fax: 819 838-5539
E-mail: wulftec@wulftec.com

WWW.WULFTEC.COM